

FOOD SERVICE TECHNOLOGY CENTER

PROMOTING ENERGY EFFICIENCY IN FOODSERVICE

1.800.398.3782 12949 Alcosta Blvd Suite 101 San Ramon CA 94583

Pre Rinse Spray Nozzle Test Summary Report **FSTC Report #: 5012.09.36** **Date: 10.14.09**

Specifications	
Make	T&S Brass
Model	JetTSpray B-0108-C
Rated Flow Rate @ 60 psi (gpm)	0.65

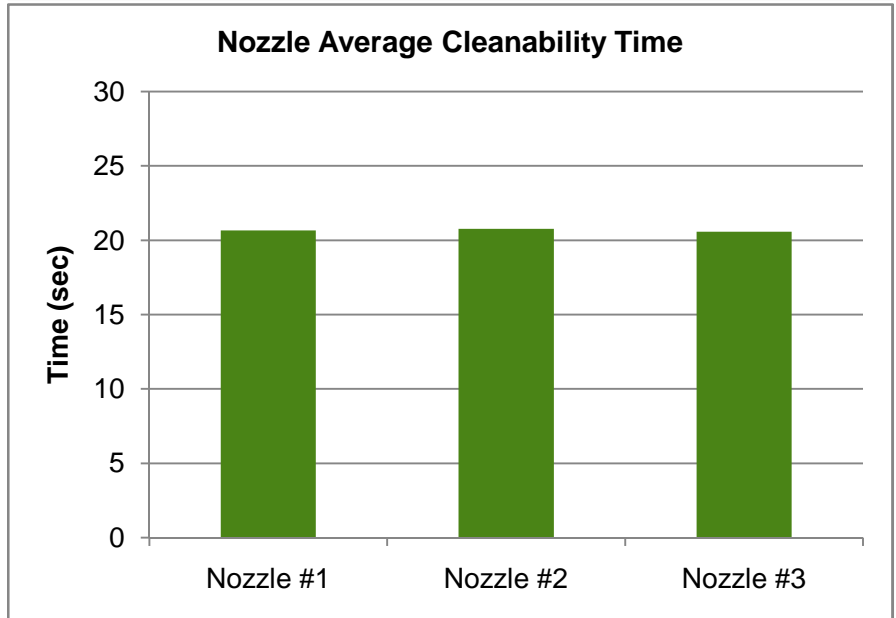
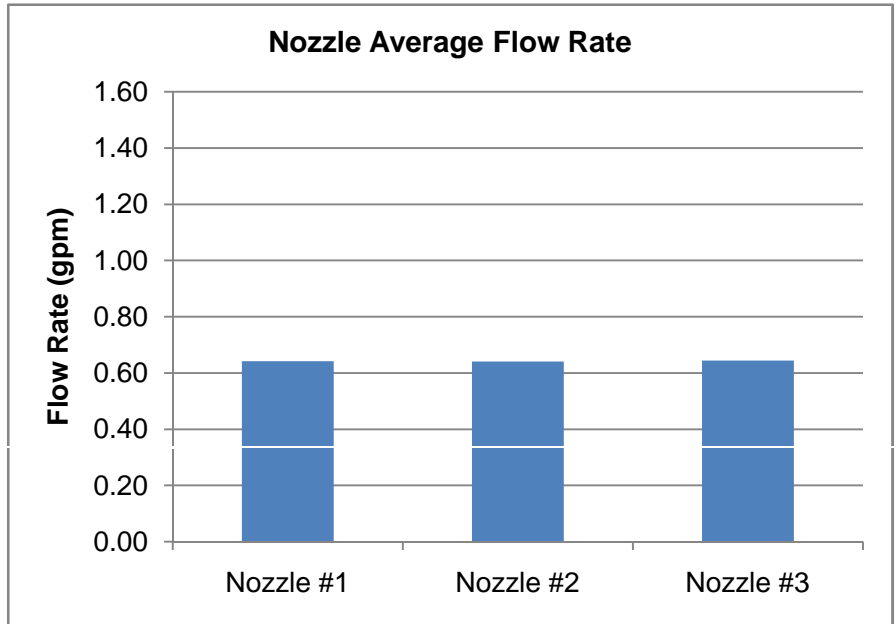
Test Parameters	
Water Pressure	60 ± 2 psi
Water Temperature	120 ± 4°F

Nozzle #1 - Solid Position		
Test	Flow Rate (gpm)	Cleanability (seconds)
1	0.64	21
2	0.64	20
3	0.64	21
Average	0.64	21

Nozzle #2 - Solid Position		
Test	Flow Rate (gpm)	Cleanability (seconds)
1	0.65	21
2	0.64	21
3	0.64	21
Average	0.64	21

Nozzle #3 - Solid Position		
Test	Flow Rate (gpm)	Cleanability (seconds)
1	0.65	21
2	0.64	20
3	0.64	21
Average	0.64	21

Average Results		
	Water Flow (gpm)	Cleanability (seconds)
Nozzle #1	0.64	21
Nozzle #2	0.64	21
Nozzle #3	0.64	21
Average	0.64	21



- Tested in accordance with ASTM F2324 - 03 (Standard Test Method for Prerinse Spray Valves)
- Tested nozzles are in compliance with the minimum performance provisions shown in section 1605.3(h) of CA Title 20 Appliance Efficiency Regulation
- Tested nozzles are in compliance with the appropriate marking requirements shown in section 1607 of CA Title 20 Appliance Efficiency Regulation

- The Food Service Technology Center program is funded by the California utility customer and administered by the Pacific Gas & Electric Company under the auspices of the California Public Utilities Commission



T&S BRASS AND BRONZE WORKS, INC.

2 Saddleback Cove / P.O. Box 1088
Travelers Rest, SC 29690



REG. #A2601
ISO #9001

Model No.

B-0108-C

Item No.

Travelers Rest, SC: 800-476-4103 Simi Valley, CA: 800-423-0150 Fax: 864-834-3518 www.tsbrass.com

This Space for Architect/Engineer Approval

Job Name _____ Date _____

Model Specified _____ Quantity _____

Customer/Wholesaler _____

Contractor _____

Architect/Engineer _____

EPAct2005 COMPLIANT

Non-Slip Ergonomic Santoprene Grip w/ Built-in Heat Dissipation Channels
Crush-Resistant w/ Delrin Waterways

Extra Washer For Hose Connections

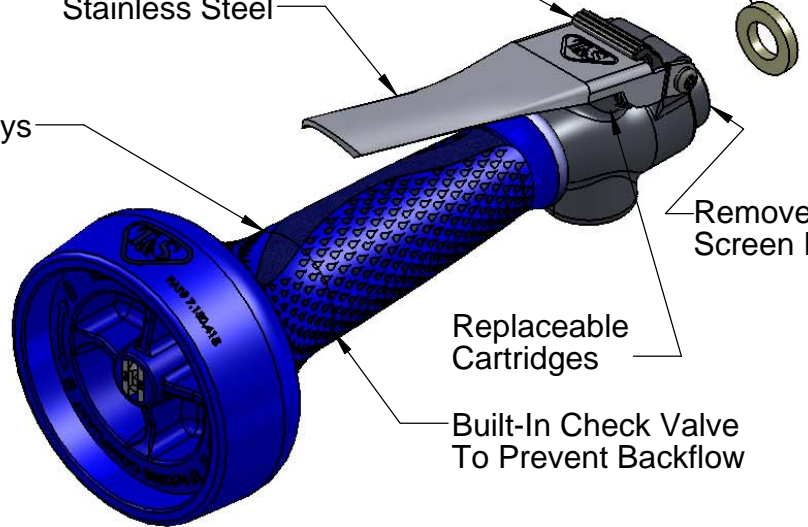
One-Handed Metal Trigger Lock w/ Added Anti-Rotational Feature

Surgical-Grade Polished Stainless Steel

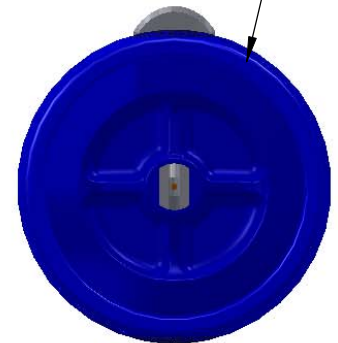
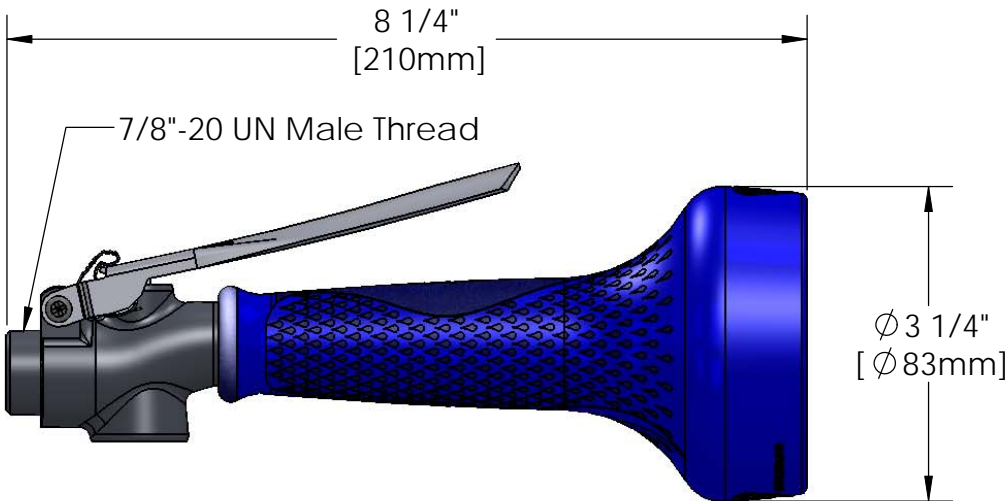
Removeable Screen Filter

Replaceable Cartridges

Built-In Check Valve To Prevent Backflow



0.65 GPM @ 60 PSI
Optional B-0108
1.48 GPM Available



Product Specifications:

0.65 GPM Spray Valve w/ Ergo-Grip, Replaceable Spray Face, & Integrated One-Handed Trigger Lock

Drawn	Checked	Approved
JRM		
Scale:	Date:	
1:2		



T&S BRASS AND BRONZE WORKS, INC.

2 Saddleback Cove / P.O. Box 1088
Travelers Rest, SC 29690



REG. #A2601
ISO #9001

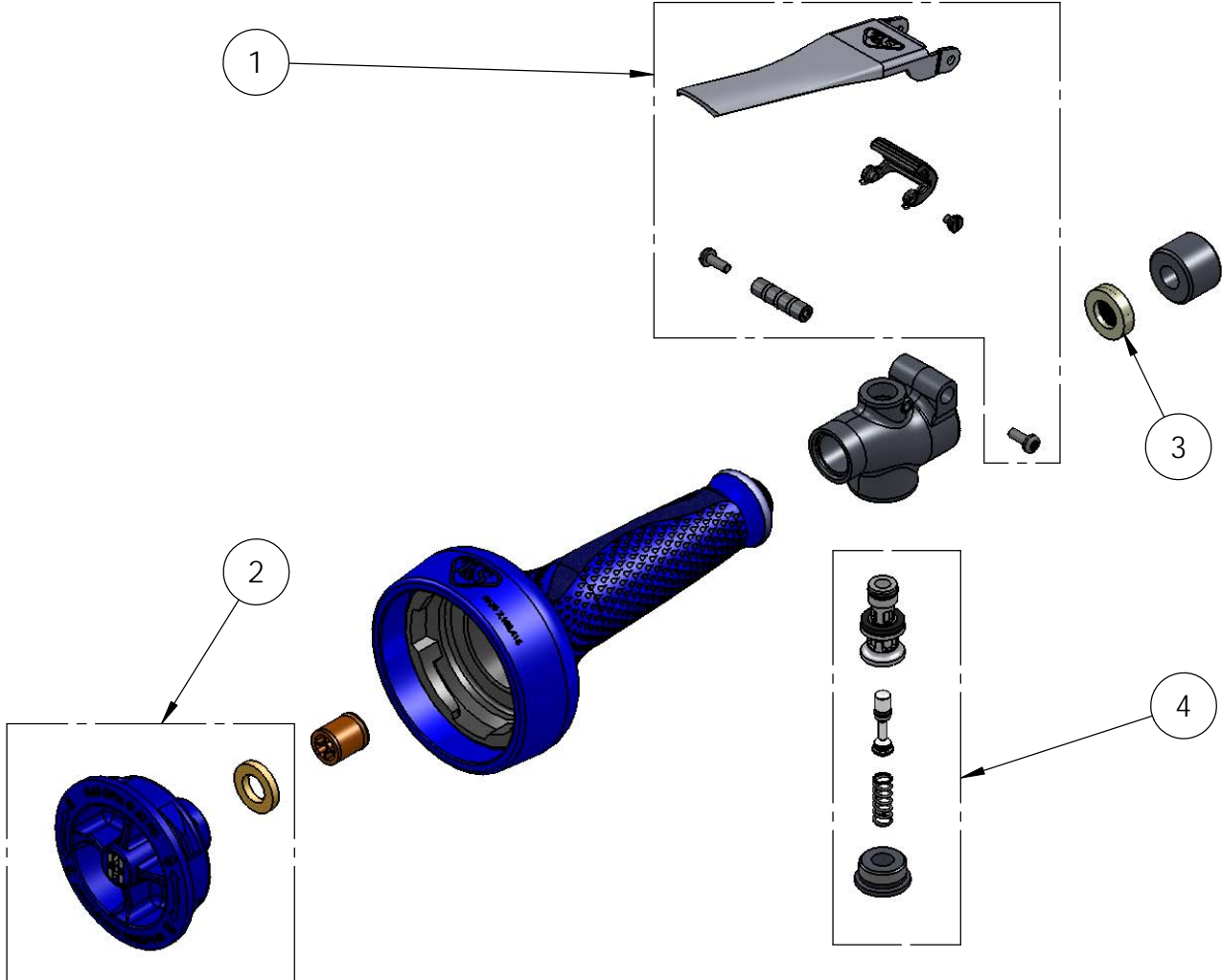
Model No.

B-0108-C

Item No.

Simi Valley, CA: 800-423-0150 Fax: 864-834-3518 www.tsbrass.com

ITEM NO.	SALES NO.	DESCRIPTION
1	108T-RK	Trigger Repair Kit
2	108CSF-RK	Spray Face Repair Kit
3	108S-RK	Inlet Screen/Washer Repair Kit
4	108V-RK	Valve Repair Kit



Note:
Individual Items in Repair Kits
are not Sold Separately

Product Specifications:

**0.65 GPM Spray Valve w/ Ergo-Grip,
Replaceable Spray Face, &
Integrated One-Handed Trigger Lock**

Drawn JRM	Checked	Approved
Scale: NTS	Date:	

Nozzle #1 Data Recording Sheet

Make	T&S Brass		
Model	JetTSpray B-0108-C		
Rated Flow Rate	0.65		
Pre Rinse Spray Nozzle	1%		

Measured Flowrate		
	#/H2O	gpm
Test #1	5.36	0.64
Test #2	5.33	0.64
Test #3	5.37	0.64
Average	5.3533	0.6421

Measured Cleanability Times (sec)		
TEST 1	TEST 2	TEST 3
29.5	20.1	21.5
20.3	19.5	20.3
21	19.66	20.98
18.5	18.3	21.8
19.5	20.55	18.4
20.3	20.66	21.55
20.76	23.66	23.5
19.3	19.78	24.6
20.8	19.8	23.5
21.5	20.87	20.33
20.5	20.69	19.5
19.2	20.65	20.56
20.3	21.87	18.74
20.3	23.5	19.65
20.11	19.45	21.55
19.6	18.5	20.6
20.58	20	21.6
19.88	19.52	20.36
19.3	19.57	19.5
20.55	21.95	20.96
Average	Average	Average
20.59	20.43	20.97

Nozzle #2 Data Recording Sheet

Make	T&S Brass		
Model	JetTSpray B-0108-C		
Rated Flow Rate	0.65		
Pre Rinse Spray Nozzle	1%		

Measured Flowrate		
	#/H2O	gpm
Test #1	5.39	0.65
Test #2	5.31	0.64
Test #3	5.33	0.64
Average	5.3433	0.6409

Measured Cleanability Times (sec)		
TEST 1	TEST 2	TEST 3
20.36	20.33	20.6
21.2	21.5	21.3
19.35	20.29	20.3
20.04	20.53	20.3
22.13	20.15	21.3
20.4	22.3	20.95
21.33	20.31	20.36
21.53	21.89	21.96
20.36	22.37	22.3
22.05	20.11	19.5
20.06	19.8	20.14
20.68	20.16	21.3
20.15	21.3	21.45
23.15	23.35	21.6
20.31	20.45	20.6
19.3	20.45	19.5
20.4	19.5	20.55
21.2	22.58	20.6
20.36	20.3	20.89
19.35	21	18.6
Average	Average	Average
20.69	20.93	20.71

Nozzle #3 Data Recording Sheet

Make	T&S Brass		
Model	JetTSpray B-0108-C		
Rated Flow Rate	0.65		
Pre Rinse Spray Nozzle	1%		

Measured Flowrate		
	#/H2O	gpm
Test #1	5.38	0.65
Test #2	5.36	0.64
Test #3	5.365	0.64
Average	5.3683	0.6439

Measured Cleanability Times (sec)		
TEST 1	TEST 2	TEST 3
22.65	22.71	18.9
20.65	22.31	21.48
19.03	21.29	21.49
20.43	20.25	19.5
19.54	19.81	21.47
20.2	18.95	20.27
19.23	20.14	21.97
20.61	22.43	22.19
19.47	21.81	22.28
20.27	21.41	20.27
22.49	19.23	20.37
18.99	19.49	21.27
21.46	18.06	20.05
19.94	23.07	19.01
22.35	19.15	18.7
22.49	19.37	21.1
20.7	18.36	22.23
22.3	19.28	20
21.65	20.93	20.81
19.74	21.01	17.75
Average	Average	Average
20.71	20.45	20.56